

# STRAUMANN® BIOMATERIALS

Master any challenge.





## COMPREHENSIVE

Our comprehensive portfolio provides you with exactly the choice you need to master challenges from surgical/flapless periodontal regeneration, enhanced wound healing, bone regeneration, to soft-tissue management and wound care.



## INDIVIDUAL SOLUTIONS

We understand that an all-rounder, one-size-fits all solution, does not always help you meet every challenge. That's why we provide individual solutions for your individual challenges.



## POWERFUL

Whether it's better healing, volume preservation, speed or natural esthetic results, we provide exactly what you need to meet your challenges, backed by scientific evidence and powered by innovation.

Modern dentistry needs specific solutions to ensure maximum performance and security.





# STRAUMANN® BIOMATERIALS. WHAT CHALLENGE ARE YOU GOING TO **MASTER** TODAY?

We understand that your cases are as individual as your patients. That's why we offer products you feel comfortable with and can depend on, day in, day out. You can trust in the experience and expertise, that is synonymous with Straumann®, to deliver the right solution for different situations. Whatever your patient needs: from a volume preserving xenograft, to the speed and natural results of an allograft, or a well-balanced combination, our innovative solutions provide you with exactly what you need to master your challenges.

Together with our strategic partners, Straumann® now provides a carefully selected and comprehensive portfolio in oral regeneration. Our unique biologics, complete GBR portfolio and innovative custom solutions are designed to help you master the challenges you might face in your daily practice.

## BONE GRAFTS

# STRAUMANN® XENOGRAFT



### Non-sintered granules

The everyday choice for successful bone and tissue regeneration.

Straumann® XenoGraft:

- Easy to handle
- Long-term volume stability
- Successfully applied in over 500,000 cases worldwide



## FEATURES AND BENEFITS

|   |  |
|---|--|
| <b>Osteoconductivity</b>                        | The natural structure of Straumann® XenoGraft with interconnected porous granules facilitates the adhesion and invasion of bone forming cells and results in complete integration of the implant due to the ingrowth of cells and blood vessels.   |
| <b>Healing environment and volume stability</b> | Straumann® XenoGraft undergoes superficial resorption only. The granules provide excellence space maintenance and predictably integrate into newly formed bone ensuring volume maintenance and a strong long lasting matrix for successful placement of dental implants.   |
| <b>Safety</b>                                   | In order to assure maximum safety, organic components are completely removed by solvent and temperature treatment (>500 °C) during the manufacturing process of Straumann®Xenograft. Favorable handling and performance are ensured due to the comparably low temperature treatment (non-sintered), which preserves the natural microstructure of natural bone. The final sterility of Straumann® XenoGraft is ensured by gamma irradiation. |
| <b>Rapid blood uptake</b>                       | Straumann® XenoGraft particles absorb liquid quickly and adhere to each other after mixing.  |
| <b>Easy handling and application</b>            | Straumann® XenoGraft particles stick to the spatula after hydration. Avoid condensation of the particles during application. Non compacted particles leave space for blood vessel ingrowth and formation of new bone matrix.   |



NIBEC CO., Ltd.

Iwol electricity-electronic Agro-industrial Complex, 116, Bamdi-gil,  
Iwol-myeon, Jincheon-gun, Chungcheongbuk-do, 27816, Korea

## PROPERTIES

| Attribute                 | Description   |
|---------------------------|---|
| Origin                    | Bovine cancellous bone particles  |
| Composition               | Calcium phosphate (100% pure hydroxyapatite, mineral phase)               |
| Degradation kinetics      | Long-term integration of bovine particles, very slow, limited degradation |
| Healing-/integration time | 6–9 months (depending on defect)  |
| Storage temperature       | 15–25°C   |
| Shelf life                | 3 years (from date of production)   |

## APPLICATION AND HANDLING

### Rehydration

Rehydration in blood or saline solution is recommended and facilitates handling and application.

### Application

- Straumann® XenoGraft can be delivered to the surgical site with surgical curette or periosteal elevator after wetting with blood or saline solution.
- Ensure maximum contact between the graft material and well vascularized, bleeding bone surface to facilitate ingrowth of new blood vessels and bone forming cells.
- A bioabsorbable membrane should be placed over the graft.

### Wound closure

Ensure that soft tissue coverage of the grafted site is complete and free of tension

### Healing time and Re-entry

The appropriate healing time is patient- and site-dependent and has to be decided by the clinician based on his diagnosis of the patient's individual situation.

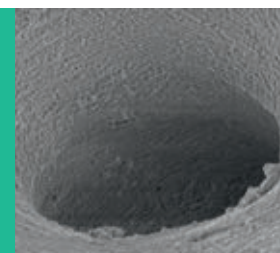
A minimum healing period of six months is recommended before re-entry to ensure stable integration of particles.

### Combining with Allograft

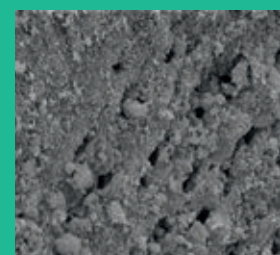
Combining of Straumann® XenoGraft with allogeneic bone combines the advantages of both materials; the biological potential of allograft and the long-term stability of Straumann® XenoFlex lead to fast regeneration of vital, strong bone.

### Combining with autologous bone

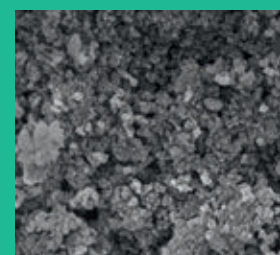
Combined use of Straumann® XenoGraft with autologous bone bring about a biological activity (osteo-inductive and osteo-genetic properties of autologous bone) and may support faster regeneration and improved formation of new bone.



1,000× magnification



5,000× magnification



20,000× magnification

### Available in the following sizes

| Code        | Volume (g/cc)  | Granules Size (mm) | Product   |
|-------------|----------------|--------------------|---|
| S1-0210-025 | 0.25 g/0.55 cc | 0.2–1.0 mm         | Straumann® XenoGraft granules in bowl-type glass vial |
| S1-0210-050 | 0.5 g/1.3 cc   |                    |   |
| S1-0210-100 | 1.0 g/2.4 cc   |                    |   |
| S1-0210-200 | 2.0 g/4.5 cc   |                    |   |
| S1-1020-025 | 0.25 g/0.68 cc | 1.0–2.0 mm         | Straumann® XenoGraft granules in bowl-type glass vial |
| S1-1020-050 | 0.5 g/1.55 cc  |                    |   |
| S1-1020-100 | 1.0 g/2.9 cc   |                    |   |
| S1-1020-200 | 2.0 g/5.0 cc   |                    |   |



## BONE GRAFTS

# STRAUMANN® XENOFLEX

Bovine



### Collagenated xenograft cube

Straumann® XenoFlex is a biomimetic composite material that resembles the native bone in its basic biphasic composition of collagen and xenogenic hydroxyapatite. It has beneficial handling characteristics and the ability to be shaped to match the individual defect situation. Straumann® XenoFlex – an efficient, easy to handle, volume stable solution for the treatment of bone defects.



## FEATURES AND BENEFITS

|   |   |
|---|---|
| <b>Osteoconductivity</b>                        | The natural structure of Straumann® XenoFlex with interconnected porous granules and purified collagen facilitates the adhesion and invasion of bone forming cells and results in complete integration of the implant due to the ingrowth of cells and blood vessels.   |
| <b>Healing environment and volume stability</b> | <p>The collagen portion of Straumann® XenoFlex supports the initial healing environment and binding of the granules to the defect. The collagen creates the environment favorable for bone generation and is decomposed after a certain time (weeks).</p> <p>The granules undergo superficial resorption only. The granules provide excellence space maintenance and predictably integrate into newly formed bone ensuring volume maintenance and a strong long lasting matrix for successful placement of dental implants.</p> |
| <b>Safety</b>                                   | In order to assure maximum safety, organic components are completely removed by solvent and temperature treatment (>500 °C) during the manufacturing process of Straumann®Xenoflex. The final sterility of Straumann® XenoFlex is ensured by gamma irradiation.   |
| <b>Spongy consistency after hydration</b>       | <p>After hydration Straumann® XenoFlex changes to a slightly spongy consistency enabling excellent handling and defect application.</p> <p>The collagen fibers have intrinsic hemostatic properties facilitating the adhesion of proteins and signaling molecules from the blood to the embedded granules to further improve the fast bony integration of Straumann® XenoFlex.</p>  |
| <b>Easy handling and application</b>            | <p>Straumann® XenoFlex can be easily cut to the needed size and shape in dry and wet condition.</p> <p>The product can be placed into defect in one piece using tweezers shortening operation time.</p>   |



NIBEC CO., Ltd.

Iwol electricity-electronic Agro-industrial Complex, 116, Bamdi-gil,  
Iwol-myeon, Jincheon-gun, Chungcheongbuk-do, 27816, Korea

## PROPERTIES

| Attribute                 | Description   |
|---------------------------|---|
| Origin                    | Bovine cancellous bone particles<br>Porcine collagen type I   |
| Composition               | 90% Calcium phosphate (100% pure hydroxyapatite, mineral phase)<br>10% Type I Collagen  |
| Degradation kinetics      | Fast binding at defect site due to 10% of porcine collagen, very slow superficial degradation of bovine particles. Long term osseous integration of particles into newly formed bone matrix |
| Healing-/integration time | 6–9 months (depending on defect)  |
| Storage temperature       | 2–30 °C   |
| Shelf life                | 3 years (from date of production)   |

## APPLICATION AND HANDLING

### Rehydration

Rehydration in blood or saline solution is recommended and facilitates handling and application.

### Application

- Straumann® XenoFlex may be cut to the needed size in dry form or after hydration in blood or saline solution (using tweezers and scissors).
- Ensure maximum contact between the graft material and well vascularized, bleeding bone surface to facilitate ingrowth of new blood vessels and bone forming cells.
- A bioabsorbable membrane should be placed over the graft.

### Wound closure

Ensure that soft tissue coverage of the grafted site is complete and free of tension

### Healing time and Re-entry

The appropriate healing time is patient- and site-dependent and has to be decided by the clinician based on his diagnosis of the patient's individual situation.

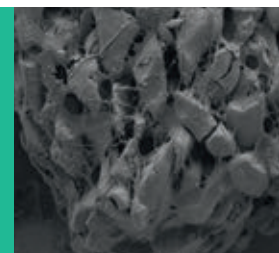
A minimum healing period of six months is recommended before re-entry to ensure stable integration of particles.

### Combining with Allograft

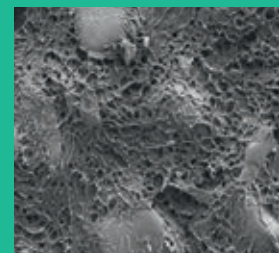
Combining of Straumann® XenoFlex with allogeneic bone combines the advantages of both materials; the biological potential of allograft and the long-term stability of Straumann® XenoFlex lead to fast regeneration of vital, strong bone.

### Combining with autologous bone

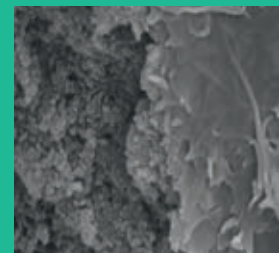
Combined use of Straumann® XenoFlex with autologous bone bring about a biological activity (osteo-inductive and osteo-genetic properties of autologous bone) and may support faster regeneration and improved formation of new bone.



50 × magnification



100 × magnification



50,000 × magnification

### Available in the following sizes

| Code        | Dimension<br>L × W × H (mm) | Product                   |
|-------------|-----------------------------|---------------------------|
| NI-0110-005 | 6 × 6 × 3, 50 mg            | Straumann® XenoFlex Block |
| NI-0110-010 | 6 × 6 × 6, 100 mg           |                           |
| NI-0110-025 | 7 × 8 × 9, 250 mg           |                           |
| NI-0110-050 | 9 × 10 × 11, 500 mg         |                           |

| Code         | Dimension<br>Ø × L (mm) | Product                     |
|--------------|-------------------------|-----------------------------|
| NI-0110-025S | 4.6 × 40, 250 mg        | Straumann® XenoFlex Syringe |
| NI-0110-050S | 5.6 × 45, 500 mg        |                             |

## MEMBRANES

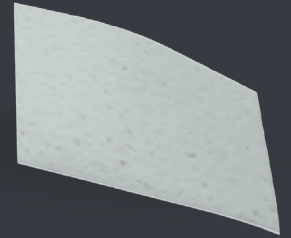
# STRAUMANN® MEMBRANE FLEX™

Porcine



### Minimally crosslinked porcine peritoneum collagen membrane

Membrane Flex™ provides flexibility and strength in an easy-to-handle, easy-to-suture barrier for soft tissue support and graft containment. Meticulously manufactured from highly purified intact porcine collagen and minimally crosslinked, it's biocompatible and predictably resorbable. It naturally conforms to defects and contours – plus, it's easy to reposition. Once in place, it can be firmly anchored to surrounding tissue with minimal risk of tearing or detachment, thanks to its high suture pullout strength.\*



## FEATURES AND BENEFITS

|   |   |
|---|---|
| <b>Desirable handling characteristics</b> | Not side specific.<br>Can be placed dry or hydrated.<br>Even when hydrated, does not adhere to gloves or instruments.<br>Can be easily repositioned for precise placement.<br>Takes sutures or tacks with ease, for simple yet secure placement.      |
| <b>Dependable strength</b>                | Proven biomechanical strength enhances fixation assurance.*   |
| <b>Supports wound healing</b>             | Protects the graft area from unwanted soft tissue infiltration during the initial phase of healing while still allowing for healthy nutrient transfer.<br>Resorbs predictably over 3 to 4 months as new host collagen is simultaneously regenerated.* |
| <b>Minimal crosslinking</b>               | The intact tissue of porcine peritoneum provides inherent strength which is further minimally crosslinked to control resorption time and handling.  |

\*Data on file with manufacturer



**Collagen Matrix, Inc.**  
15 Thornton Road  
Oakland New Jersey 07436  
USA

**Literature:**  
Li et al., Materials Science, 2015



## PROPERTIES

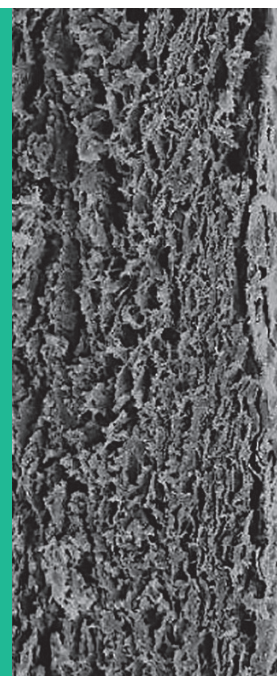
| Attribute           | Description                                |
|---------------------|--|
| Origin              | Porcine peritoneum                         |
| Composition         | Types I and III collagen                   |
| Structure           | Minimally cross-linked with glutaraldehyde |
| Thickness           | 0.5 mm                                     |
| Degradation time    | 12–16 weeks                                |
| Storage temperature | Room temperature (15–30 °C)                |
| Shelf life          | 3 years                                    |



Courtesy of Prof. Carlos Nemcovsky

## APPLICATION AND HANDLING

- It's easy to handle and to place because it's not side specific
- With outstanding flexibility, it easily drapes over defects and naturally conforms to contours
- Flexibility with placement as it can be easily repositioned for precise placement
- Can be placed dry or hydrated
- Even when hydrated, does not adhere to gloves or instruments
- Takes sutures or tacks with ease, for simple yet secure fixation



### Available in the following sizes

| Code    | Description | Product                      |
|---------|-------------|------------------------------|
| 070.008 | 15 × 20 mm  | Straumann®<br>Membrane Flex™ |
| 070.009 | 20 × 30 mm  |                              |
| 070.010 | 30 × 40 mm  |                              |

STRAUMANN® EMDOGAIN®

# STRAUMANN® EMDOGAIN® FL

Porcine



## Flapless periodontal regeneration

When applied to cleaned tooth root surfaces the unique protein composition in Straumann Emdogain® FL is able to induce the regeneration of all periodontal tissues: cementum, periodontal ligament, alveolar bone and gingiva.



## FEATURES AND BENEFITS

|  |  |
|--|--|
| <b>Less surgeries</b>                      | Adding Emdogain® to the initial phase of periodontal therapy helps avoiding the surgery by solving 42% of the pockets non-surgically <sup>20</sup>   |
| <b>More effective</b>                      | Significantly improved pocket probing depth reduction compared to the SRP procedure without Emdogain <sup>22</sup>   |
| <b>More efficient</b>                      | Similar results at 12 and 24 months as if the surgery would have been performed <sup>21</sup>  |
| <b>Less pain and inflammation</b>          | The wound healing properties of Emdogain® reduce pain reported by patients and overall inflammation markers <sup>23</sup>  |
| <b>Minimal invasive</b>                    | A reduced invasiveness is allowed thanks to the new thinner cannula <sup>20</sup> that has a diameter similar to a periodontal probe   |
| <b>Thinner applicator for flapless use</b> | True periodontal regeneration can now be achieved without open flap surgery for pockets with depth of 5–9 mm after Scaling and Root planning (SRP) procedures were performed <sup>20</sup> |



Institut Straumann AG  
Peter-Merian-Weg 12  
4002 Basel  
Switzerland

## PROPERTIES

| Attribute           | Description  |
|---------------------|--|
| Origin              | Porcine unerupted tooth buds                                     |
| Composition         | Enamel matrix derivative, Propylene Glycol Alginate (PGA), water |
| Structure           | Ready to use gel   |
| Storage temperature | Cool storage in fridge (2–8 °C)                                  |
| Shelf life          | 2 years  |



Courtesy of Prof. Mario Aimetti,  
University of Turin, Italy

## APPLICATION AND HANDLING

### Expertize and outstanding clinical support

Following decades of clinical success in regenerative periodontal surgery and thanks to the introduction of a new applicator, Emdogain®, the unique gel containing enamel matrix derivative can now be applied flapless in periodontal pockets after scaling and root planning procedures.

### Effective

Emdogain® FL renders procedures more effective and eliminates more periodontal pockets as part of periodontal debridement process.<sup>20</sup>

### Reducing invasiveness

Using Emdogain® FL in a flapless approach leads to similar clinical results as when Emdogain® is applied with a flap surgery after 12 and 24 months.<sup>22</sup>

### Patient comfort

Moreover, it improves the quality of life of patients by reducing pain, swelling and systemic inflammation.<sup>20</sup>

## TREATMENT

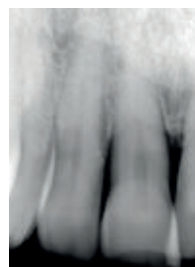
### 3 year results after flapless periodontal regeneration with Emdogain® FL.

Pictures with courtesy of Dr. Orest G Komarnyckj DDS,  
Phoenix AZ, USA



Left frontal incisor before treatment

PPD ≥ 9 mm



3 years after treatment with  
Straumann® Emdogain® FL

PPD = 1–2 mm

### Available in the following sizes

| Product  | Code    |
|--|---------|
| <b>Emdogain® FL 0.15 ml</b>                                  |         |
| 1× Emdogain® FL 0.15 ml<br>1× PrefGel® 0.6 ml<br>2× cannulas | 075.130 |
| <b>Emdogain® FL 0.3 ml</b>                                   |         |
| 1× Emdogain® FL 0.3 ml<br>1× PrefGel® 0.6 ml<br>2× cannulas  | 075.131 |

STRAUMANN® EMDOGAIN®

# STRAUMANN® EMDOGAIN®

Porcine



## Periodontal surgery and oral wound healing

Straumann® Emdogain® is a unique gel containing enamel matrix derivative. This mixture of natural proteins can induce biological processes that usually take place during the development of the periodontium and may stimulate certain cells involved in the healing process of soft and hard tissues.



Refer to the instructions for use available at [ifu.straumann.com](http://ifu.straumann.com)

## FEATURES AND BENEFITS

|  |   |
|--|---|
| <b>Emdogain® induces true regeneration</b>                                   | By modulating the wound healing process, Emdogain® induces the regeneration of a functional attachment in periodontal procedures (as evidenced by human histological data <sup>5,6</sup> )  |
| <b>Emdogain® improves wound healing in oral surgical procedures</b>          | By promoting angiogenesis <sup>7,8</sup> , modulating the production of factors related to inflammation <sup>9</sup> and thanks to its anti-microbial effect toward oral pathogens <sup>10</sup> , Emdogain® accelerates the wound healing process of oral surgical procedures <sup>11</sup>  |
| <b>Emdogain® increased the predictability of your periodontal procedures</b> | Emdogain® leads to:<br>→ significantly improved clinical parameters in intra-osseous defects compared to open flap debridement procedures alone <sup>12</sup><br>→ increased root coverage achieved when used in a coronally advanced flap (CAF) compared to CAF alone <sup>13</sup> , and leads to results comparable to CAF + Connective Tissue Graft <sup>14</sup>   |
| <b>Emdogain® helps you achieve patient satisfaction</b>                      | → When used to treat intra-osseous defects, Emdogain® contributes to improve your patients' dental prognosis<br>→ When used in oral surgical procedures in general, Emdogain® accelerates wound closure <sup>15</sup> , and reduces post surgical pain and swelling <sup>16</sup><br>→ When used in periodontal plastic procedures around teeth and implants, Emdogain® may improve the esthetics of the results thanks to improved wound healing |
| <b>Emdogain® is easy to apply</b>  | Because Emdogain® is a gel, it is easy to apply, even in defects difficult to access  |
| <b>Emdogain® means peace of mind</b>   | Emdogain® is backed by extensive and long term clinical documentation. It is documented in over 1000 scientific publications including 600 clinical publications <sup>17</sup> and 10 year data <sup>14,18</sup>  |



Institut Straumann AG  
Peter-Merian-Weg 12  
4002 Basel  
Switzerland

## PROPERTIES

| Attribute           | Description  |
|---------------------|--|
| Origin              | Porcine unerupted tooth buds                                     |
| Composition         | Enamel matrix derivative, Propylene Glycol Alginate (PGA), water |
| Structure           | Ready to use gel   |
| Storage temperature | Cool storage in fridge (2–8 °C)                                  |
| Shelf life          | 2 years  |

## APPLICATION AND HANDLING

### Emdogain® in oral regeneration

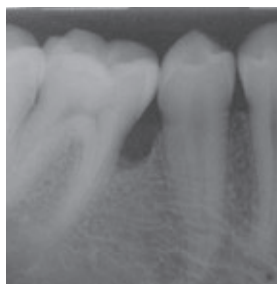
Periodontitis is associated with a loss of tooth-supporting tissues which is irreversible and the main reason for tooth loss if left untreated. Emdogain® is the golden standard when it comes to inducing the regeneration of lost periodontal tissues in a safe, easy and predictable way. Long-term clinical studies have demonstrated that Emdogain® can effectively help save teeth and revert gingival recessions.

### Emdogain® in wound healing

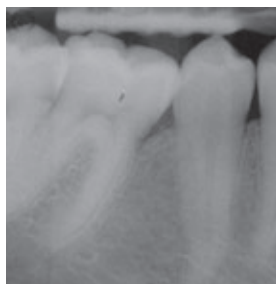
As esthetics, comfort and efficiency become more and more important when it comes to implant dentistry, Emdogain® is the solution you have been searching for. Emdogain® allows accelerated healing, minimizing discomfort for your patients through less swelling, less pain and faster recovery. Further it will initiate a natural rehabilitation that leads to esthetic outcomes.

## TREATMENT

Courtesy of Prof. Carlos Nemcovsky



Before treatment with Straumann® Emdogain®



20 years after treatment with Straumann® Emdogain®

Courtesy of Prof. Giovanni Zucchelli



Before treatment with Straumann® Emdogain®



8 months after treatment with Straumann® Emdogain®

### Available in the following sizes

| Product   | Code     |
|---|----------|
| <b>Emdogain® Singlepack</b>                                       |          |
| 1 × Straumann® Emdogain® 0.15 ml                                  | 075.127W |
| 1 × Straumann® Emdogain® 0.3 ml                                   | 075.101W |
| 1 × Straumann® Emdogain® 0.7 ml                                   | 075.102W |
| <b>Emdogain® Multipack</b>  |          |
| 3 × Straumann® Emdogain® 0.3 ml<br>3 × Straumann® PrefGel® 0.6 ml | 075.114W |
| 3 × Straumann® Emdogain® 0.7 ml<br>3 × Straumann® PrefGel® 0.6 ml | 075.116W |
| <b>Emdogain® 5-Pack</b>   |          |
| 5 × Straumann® Emdogain® 0.15 ml                                  | 075.098W |
| <b>PrefGel®</b>   |          |
| 5 × Straumann® PrefGel® 0.6 ml                                    | 075.203W |





LABRIDA BIOCLEAN™

# LABRIDA BIOCLEAN™



For effective debridement of teeth and dental implant surfaces

Labrida BioClean™ is a medical device designed for effective cleaning of osseointegrated dental implants and/or teeth with pocket depths  $\geq 4\text{mm}$ .<sup>1,5</sup> Removal of plaque-forming bacteria from the infected dental implant/tooth surface is the first step in biofilm management.



## FEATURES AND BENEFITS

|  |  |
|--|--|
| <b>For efficient implant care<sup>1-5</sup></b>                        | <ul style="list-style-type: none"> <li>→ Efficient implant maintenance</li> <li>→ Effective cleaning of the implant surface</li> <li>→ Gentle to implant surface*</li> </ul>   |
| <b>Maintains peri-implant health<sup>1-3, 6-9</sup></b>                | <ul style="list-style-type: none"> <li>→ Treatment of peri-implant mucositis and peri-implantitis</li> <li>→ Prevention of peri-implantitis</li> <li>→ Supports peri-implant health</li> </ul>   |
| <b>Increases patient comfort compared to Ti curettes<sup>2,5</sup></b> | <ul style="list-style-type: none"> <li>→ More comfortable for patient compared to treatment with Ti curettes</li> </ul>  |
| <b>Chitosan fibres</b>   | <p>Chitosan</p> <ul style="list-style-type: none"> <li>→ is a non-allergenic marine biopolymer</li> <li>→ is biocompatible and resorbs very fast</li> <li>→ has documented bacteriostatic and anti-inflammatory properties<sup>10,11,12</sup></li> </ul> |
| <b>Polypropylene sleeve</b>  | <ul style="list-style-type: none"> <li>→ Protective properties against mechanical damage of implant prosthesis</li> </ul>  |
| <b>Medical grade stainless steel mandrel</b>                           | <ul style="list-style-type: none"> <li>→ Durable material</li> </ul>   |

\* demonstrated in vitro

 **Labrida AS**  
Slemdalsveien 1  
0369 Oslo  
Norway

## PROPERTIES

| Attribute           | Description              |
|---------------------|--------------------------|
| Storage temperature | Room temperature 2–30 °C |
| Shelf life          | 3 years                  |










## APPLICATION AND HANDLING

Labrida BioClean™ is a dental device with a working end of fastdegrading chitosan attached to a medical grade stainless steel stem covered with a white soft polypropylene sleeve. The sleeve protects the implant prosthesis from damage. Labrida BioClean™ is a disposable device for cleaning of up to 4 infected dental implants per patient. Labrida BioClean™ has to be used with an oscillating dental hand piece (average 600–1000rpm).



### Available in the following sizes

| Product           | Code         |
|-------------------|--------------|
| Labrida BioClean™ | LBC2013.0001 |














## BONE BLOCK FIXATION

| Product                      | Image   | Description                                    | Material        | Code       |
|------------------------------|---|--|-----------------|------------|
| Micro-screws, cross-recessed |  | Ø1.2 mm, length 6 mm, packaging 5 pieces       | Ti              | 68-112-506 |
|                              |  | Ø1.2 mm, length 8 mm, packaging 5 pieces       |                 | 68-112-508 |
|                              |  | Ø1.2 mm, length 11 mm, packaging 5 pieces      |                 | 68-112-511 |
|                              |  | Ø1.2 mm, length 13 mm, packaging 5 pieces      |                 | 68-112-513 |
| Pilotdrill                   |  | Ø1.0 mm, length 14 mm, for Ø1.2 mm screws      |                 | 68-510-014 |
|                              |  | Ø1.2 mm, length 14 mm, for Ø1.4 mm screws      | 68-512-014      |            |
| Storage box                  |  | Storage box for micro screws, Ø1.0 mm – 1.4 mm | Stainless steel | 68-720-002 |
| Screwdriver                  |  | Screwdriver, 11 cm                             |                 | 68-740-002 |
| cortico trimmer®             |  | Instrument for maxgraft® cortico adaption      | Ti              | BO-34000   |

## BOTISS TITAN PIN SET

| Product                     | Image   | Description  | Material | Code      |
|-----------------------------|---|--|----------|-----------|
| <b>botiss Titan Pin Set</b> |   |  |          |           |
| botiss Titan Pin Set        |  | 1 × applicator<br>1 × dispenser for 15 titan pins<br>1 × titan pins 3 mm (10 pieces) |          | BO-440000 |
| botiss Titan Pins 3 mm      |  | Titan pins 3 mm (10 pieces)  |          | BO-440310 |

## ALLOGRAFT RING INSTRUMENTS

| Product                             | Image   | Description  | Material        | Code      |
|-------------------------------------|---|--|-----------------|-----------|
| <b>Surgical Kit</b>                 |   |  |                 |           |
| Allograft Ring surgical set         |    | Instrument tray complete with all instruments for the Allograft Ring surgical technique                    | Stainless steel | BK-33000  |
| <b>Closure Caps</b>                 |   |  |                 |           |
| Sterile NC Closure and Fixation Cap |    | NC Closure and Fixation Cap, Ø5.5 mm   | Ti              | 024.2220S |
| Sterile RC Closure and Fixation Cap |    | RC Closure and Fixation Cap, Ø5.5 mm   |                 | 024.4220S |
| <b>Instruments for Surgical Kit</b> |   |  |                 |           |
| Pilot Drill Ø2 mm                   |    | Outer-Ø 2 mm   | Stainless steel | BK-33001  |
| Trephine 6 mm                       |    | Outer-Ø 6 mm   |                 | BK-33002  |
| Trephine 7 mm                       |    | Outer-Ø 7 mm   |                 | BK-33003  |
| Planator 6 mm                       |    | Outer-Ø 6 mm   |                 | BK-33006  |
| Planator 7 mm                       |  | Outer-Ø 7 mm   |                 | BK-33007  |
| Diamond Tulip                       |  |  |                 | BK-33004  |
| Diamond Disc                        |  |  |                 | BK-33005  |
| Allograft Ring fix, tweezers        |  |  |                 | BK-33010  |
| Allograft Ring Sinus fix, tweezers  |  |  |                 | BK-33016  |
| <b>Instrument Tray and Rack</b>     |   |  |                 |           |
| Instrument Tray Allograft Ring      |  | Tray for Allograft Ring instruments, empty, length 135 mm, width 177 mm, height 39 mm                      | Stainless steel | BK-33009  |
| Instrument Rack                     |  | Rack for Allograft Ring instruments for 12 instruments with shaft, length 25 mm, height 51 mm, width 60 mm |                 | BK-33008  |

# STRAUMANN® BIOMATERIALS

Master any challenge.

## REFERENCES

1 Zirk et al. Prevention of post-operative bleeding in hemostatic compromised patients using native porcine collagen fleeces-retrospective study of a consecutive case series. *Oral Maxillofac Surg.* 2016. [E-Pub vor Print-Pub] <http://www.ncbi.nlm.nih.gov/pubmed/27139018> 2 Pabst AM., Happe A., Callaway A., Ziebart T., Stratul SI., Ackermann M., Konerding MA., Willershausen B., Kasaj A. In vitro and in vivo characterization of porcine acellular dermal matrix for gingival augmentation. *J Periodont Res* 2014; Epub 2013 Jul 1. 3 Rothamel D., Benner M., Fienitz T., Happe A., Kreppel M., Nickenig HJ. and Zöller JE. Biodegradation pattern and tissue integration of native and cross-linked porcine collagen soft tissue augmentation matrices – an experimental study in the rat. *Head and Face* 2014, 10:10. 4 Kasaj A, Levin L, Stratul SI, Götz H, Schlee M, Rütters CB, Konerding MA, Ackermann M, Willershausen B. Pabst AM. The influence of various rehydration protocols on biomechanical properties of different acellular tissue matrices. *Clin Oral Invest.* 2015. 5 McGuire MK, et al. A Prospective, Cased-Controlled Study Evaluating the use of Enamel Matrix Derivative on Human Buccal Recession Defects: A Human Histologic Examination. *J Periodontol.* 2016 Feb 1:1-34. 6 Sculean A, et al. Clinical and histologic evaluation of human intrabony defects treated with an enamel matrix protein derivative (Emdogain). *Int J Periodontics Restorative Dent.* 2000;20:374–381. 7 Aspriello SD, et al. Effects of enamel matrix derivative on vascular endothelial growth factor expression and microvessel density in gingival tissues of periodontal pocket: a comparative study. *J Periodontol.* 2011 Apr;82(4):606-12. 8 Guimarães et al. Microvessel Density Evaluation of the Effect of Enamel Matrix Derivative on Soft Tissue After Implant Placement: A Preliminary Study. *Int J Periodontics Restorative Dent.* 2015 Sep-Oct;35(5):733-8. 9 Sato et al. Enamel matrix derivative exhibits anti-inflammatory properties in monocytes *J Periodontol.* Mar 2008;79(3):535-40 10 Arweiler et al. Antibacterial effect of an enamel matrix protein derivative on in vivo dental biofilm vitality. *Clin Oral Investig.* 2002 Dec;6(4):205-9. Epub 2002 Nov 14. 11 Maymon-Gil T, et al. Emdogain Promotes Healing of a Surgical Wound in the Rat Oral Mucosa. *J. Periodontol.* 2016 Jan 16:1-16. 12 Tonetti et al. Enamel matrix proteins in the regenerative therapy of deep intrabony defects – A multicenter, randomized, controlled clinical trial. *J Clin Periodontology* 2002;29:317-325 13 Tonetti MS et al. Clinical efficacy of periodontal plastic surgery procedures: consensus report of Group 2 of the 10th European Workshop on Periodontology. *J Clin Periodontol.* 2014 Apr;41 Suppl 15:S36-43 14 McGuire MK, et al. Evaluation of human recession defects treated with coronally advanced flaps and either enamel matrix derivative or connective tissue: comparison of clinical parameters at 10 years. *J Periodontol.* 2012 Nov;83(11):1353-62 15 Villa O et al. *J Periodontol.* A Proline-Rich Peptide Mimic Effects of EMD in Rat Oral Mucosal Incisional Wound Healing. 2015 Dec;86(12):1386-95. 16 Jepsen S, et al. A randomized clinical trial comparing enamel matrix derivative and membrane treatment of buccal Class II furcation involvement in mandibular molars. Part I: Study design and results for primary outcomes. *J Periodontol.* 2004 Aug;75(8):1150-60. 17 According to PUBMED - search term "Emdogain" or "enamel matrix derivative". 18 Sculean A, et al. Ten-year results following treatment of intra-bony defects with enamel matrix proteins and guided tissue regeneration. *J Clin Periodontol.* 2008 Sep;35(9):817-24 19 Almqvist et al. Effects of amelogenins on angiogenesis-associated processes of endothelial cells. *J Wound Care.* 2011 Feb;20(2):68, 70-5 20 Graziani F, Gennai S, Petrini M, Bettini L, Tonetti M. Enamel matrix derivative stabilizes blood clot and improves clinical healing in deep pockets after flapless periodontal therapy: A Randomized Clinical Trial. *J Clin Periodontol.* 2019 Feb; 46(2):231-240. 21 Aimetti M, Ferrarotti F, Mariani GM, Romano F. A novel flapless approach versus minimally invasive surgery in periodontal regeneration with enamel matrix derivative proteins: a 24-month randomized controlled clinical trial. *Clin Oral Investig.* 2017 Jan;21(1): 327-337. 22 Straumann Sponsored Study, data on file, study ongoing 23 Wennström JL, Lindhe J. Some effects of enamel matrix proteins on wound healing in the dento-gingival region. *J Clin Periodontol.* 2002 Jan;29(1):9-14

## International Headquarters

Institut Straumann AG

Peter Merian-Weg 12

CH-4002 Basel, Switzerland

Phone +41 (0)61 965 11 11

Fax +41 (0)61 965 11 01

[www.straumann.com](http://www.straumann.com)

© Institut Straumann AG, 2023. All rights reserved.

Straumann® and/or other trademarks and logos from Straumann® mentioned herein are the trademarks or registered trademarks of Straumann Holding AG and/or its affiliates.

 **straumann**