

Extraction units for CAM systems

This is what makes work easier

- high reliability even with heavy use
- high suction power
- very long motor running time
- protection of the CAM unit
- cleanliness and quietness
- secure communication with your CAM unit



silent



compact

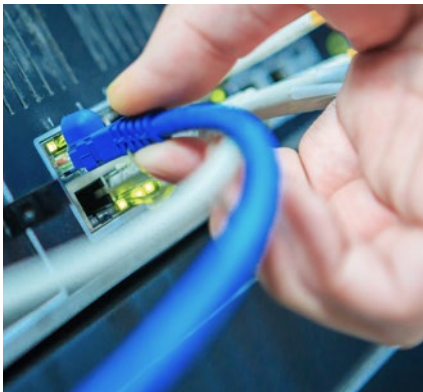


smart control



A plus for your milling devices – a plus for the health of your staff

The large quantities of dust from milling, and fine dust particles, put a lot of pressure on your CAM unit – they must be extracted quickly and effectively. This not only protects the sensitive components of your CAM unit, it's also good for the health of your staff. The Renfert CAM extraction units extract dust effectively out of your milling device, collecting it reliably with a highly efficient filter system. This maintains the functionality and the value of your CAM unit as well as ensuring clean air in the laboratory.



Intelligent connection of the extraction unit and CAM unit

The interface ensures that your CAM unit and our extraction unit understand each other perfectly: up to 8 signals can be exchanged between them. For example, the Renfert CAM extraction units can indicate to your milling device when a filter is due to be changed. Or you can simply define that breaks in the milling process should be used for cleaning the fine filter. All you need to do is to connect the extraction unit to your CAM device, and off you go!



Automatic filter cleaning for maximum suction power

Nothing is more annoying than a used-up dust bag after processing just a few milling blanks. The suction power drops significantly and extraction from the milling chamber is no longer sufficient. That's why Renfert CAM extraction units work differently: with a dust collector instead of a bag, and with automatic filter cleaning. The advantages: high suction power at all times and, incidentally, no follow-up costs for dust bags.

SILENT powerCAM EC

Extraction unit for CAM systems



silent

Powerful, bag-free extraction unit with automatic filter cleaning and EC motor technology for heavily used CAM units.

Advantages

- Bi-directional communication between extraction unit and CAM unit thanks to the PLC interface.
- Low operating noise of max. 54.3 dB (A).
- Reliable production process through brushless EC motor technology (guaranteed runtime of 5000 operating hours).

Details

- High volume flow of approx. 4000 l/min.
- No follow-up costs due to bag-free dust collection.
- Safe disposal of fine milling dust with the help of a disposal bag.



Tool-free filter and motor change possible in a few minutes

Technical data

Permissible mains voltage	220–240 V 120 V 100 V
Permissible mains frequency	50/60 Hz
Power consumption	1610 VA (230 V) 1440 VA (120 V) 1250 VA (100 V)
Volume flow (max.)	3984 l/min // 2.34 ft ³ /s
Max. depression	257 hPa 262 hPa 255 hPa // 3.73 psi 3.8 psi 3.7 psi
Filter quality	Class M according to EN 60335-2-69
CAM interface	RJ 45 socket
Number of suction hoses	1
Sound pressure level (LpA) (at max. volume flow)	54.3 dB (A)
Weight (empty)	~18 kg // ~39.7 lbs
Dimensions (W x H x D)	270 x 535 x 540 mm // 10.6 x 21.1 x 21.2 "
Ø suction fittings interior	42 mm // 1.65 "
Fill level dust collector	~7 l // ~1.85 gal

Ordering information

SILENT powerCAM EC, 220–240 V	No. 29390000
SILENT powerCAM EC, 120 V	No. 29391000
SILENT powerCAM EC, 100 V 50/60 Hz	No. 29392000
Interface cable Type A for vhf, 5 m	No. 29340005
Interface cable Type B for Roland DG, 5 m	No. 29340006
Interface cable Type C for imes-icore, 5 m	No. 29340008
Interface cable Type D for Amann Girrbach, 5 m	No. 29340009
Interface cable Type E for Yenadent, 5 m	No. 29340010
Interface cable Type F for Zirkozahn, 5 m	No. 29340011
Interface cable Type F for Zirkozahn + C14 adapter, 5 m	No. 29340012
Interface cable Type G for vhf, 5 m	No. 29340013
Interface cable Type H for Dentsply Sirona, 5 m	No. 29340016
Interface cable Type I for Up3D, 2,5 m	No. 29340017
Interface cable Type J for Canon, 5 m	No. 29340018
Interface cable Type K for DGShape, 2 m	No. 29340019
External ventilation SILENT TC/TC2/EC2/powerCAM EC, Adapter incl. Ø100 mm plastic tube, 2 m	No. 29370002

NEW SILENT powerCAM TC

Extraction unit for CAM systems

Powerful and inexpensive CAM extraction unit with collector motor, especially suitable for medium to large CAM systems.

Advantages

- Consistently full suction power due to automatic filter cleaning.
- Reliable production process through innovative motor technology (3x longer service life in comparison to conventional collector motors).
- High suction capacity up to 3980 l/min.

Details

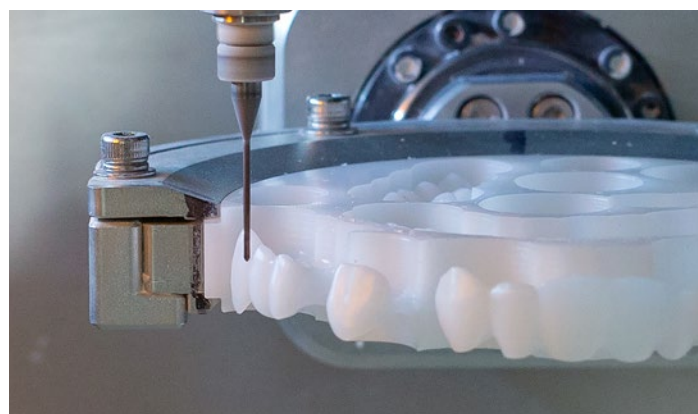
- Bi-directional communication between extraction unit and CAM equipment thanks to the PLC interface.
- Bagless fine filter technology.
- Easy motor change within minutes.
- Work in quiet conditions thanks to low operating noise of max. 54.3 dB (A).



silent



smart control



Optimum suction of the chips during milling

Technical data

Permissible mains voltage	220–240 V 120 V
Permissible mains frequency	50/60 Hz
Power consumption	850 W (230 V) 750 W (120 V)
Volume flow (max.)	3980 l/min // 2.34 ft ³ /s
Max. depression	281 hPa // 4.1 psi
Filter quality	Class M according to EN 60335-2-69
CAM interface	RJ 45 socket
Sound pressure level (LpA)	54.3 dB (A)
Weight	~22 kg // ~48.5 lbs
Dimensions (W x H x D)	275 x 535 x 540 mm // 10,8 x 21,1 x 21,3 "
Ø suction fittings interior	45 mm // 1.77 "
Ø suction fittings exterior	50 mm // 1.97 "
Fill level dust collector	~7 l // ~1.85 gal

Ordering information

SILENT powerCAM TC, 220-240 V	No. 29380000
SILENT powerCAM TC, 120C V	No. 29381000
Interface cable Type A for vhf, 5 m	No. 29340005
Interface cable Type B for Roland DG, 5 m	No. 29340006
Interface cable Type C for imes-icore, 5 m	No. 29340008
Interface cable Type D for Amann Girrbach, 5 m	No. 29340009
Interface cable Type E for Yenadent, 5 m	No. 29340010
Interface cable Type F for Zirkonzahn, 5 m	No. 29340011
Interface cable Type F for Zirkonzahn + C14 adapter, 5 m	No. 29340012
Interface cable Type G for vhf, 5 m	No. 29340013
Interface cable Type H for Dentsply Sirona, 5 m	No. 29340016
Interface cable Type I for Up3D, 2,5 m	No. 29340017
Interface cable Type J for Canon, 5 m	No. 29340018
Interface cable Type K for DGShape, 2 m	No. 29340019
Further accessories	Page 33

SILENT compactCAM

Extraction unit for CAM systems

Compact, bag-free extraction unit for use with compact, dental CAM units.

Advantages

- Bi-directional communication between extraction unit and CAM unit thanks to the PLC interface.
- Low operating noise of max. 55 dB (A).
- 3x longer service life in comparison to conventional collector motors (1000 operating hours guaranteed).

Details

- No follow-up costs due to bag-free dust collection.
- Working without interruption due to uncomplicated motor change within minutes.



silent



compact



Process reliability thanks to PLC interface

Technical data

Permissible mains voltage	230 – 240 V 220 V 120 V 100 V
Permissible mains frequency	50/60 Hz
Power consumption	490 W (230 V) 460 W (220 V) 480 W (120 V) 480 W (100 V)
Volume flow (max.)	2500 l/min // 1.47 ft ³ /s
Max. depression	219 hPa // 3.2 psi
Filter quality	Class M according to EN 60335-2-69
CAM interface	RJ 45 socket
Number of suction hoses	1
Sound pressure level (LpA) (at max. volume flow)	55 dB (A)
Weight (empty)	~13,2 kg // ~29.1 lbs
Dimensions (W x H x D)	245 x 440 x 500 mm // 9.6 x 17.3 x 19.7"
Ø suction fittings interior	35 mm // 1.38"
Ø suction fittings exterior	40 mm // 1.57"
Fill level dust collector	~2,6 l // ~0.69 gal

Ordering information

SILENT compactCAM, 230-240 V	No. 29342000
SILENT compactCAM, 220 V	No. 29342500
SILENT compactCAM, 120 V	No. 29343000
SILENT compactCAM, 100 V	No. 29343500
Interface cable Type A for vhf, 5 m	No. 29340005
Interface cable Type B for Roland DG, 5 m	No. 29340006
Interface cable Type C for imes-icore, 5 m	No. 29340008
Interface cable Type D for Amann Girrbaach, 5 m	No. 29340009
Interface cable Type E for Yenadent, 5 m	No. 29340010
Interface cable Type F for Zirkozahn, 5 m	No. 29340011
Interface cable Type F for Zirkozahn + C14 adapter, 5 m	No. 29340012
Interface cable Type G for vhf, 5 m	No. 29340013
Interface cable Type H for Dentsply Sirona, 5 m	No. 29340016
Interface cable Type I for Up3D, 2,5 m	No. 29340017
Interface cable Type J for Canon, 5 m	No. 29340018
Interface cable Type K for DGShape, 2 m	No. 29340019

Extraction units

This is what makes work easier

- extremely quiet
- strong suction power
- intuitive operation
- very long motor running time
- easy calibration
- modern, compact design



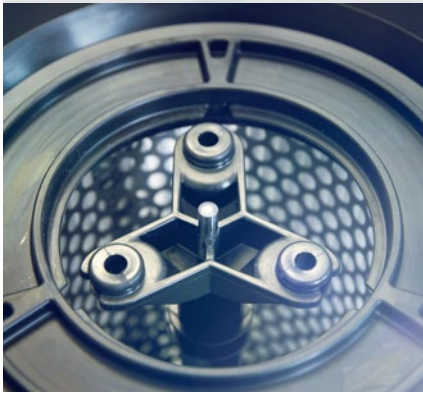
silent



compact



perfect view



Combine cleanliness and quietness

Creating a conducive work environment is possible when the noise level is low and the fine dust level in the air has been greatly reduced. SILENT extraction units are therefore not only extremely powerful – with a suction capacity (depending on the version) up to a volume flow of 4000l/min. – but also surprisingly quiet, through implementation of the results gained from psycho-acoustic research.



Easy start, intuitive operation

Renfert extraction units can be very easily and quickly connected (Plug & Play), operated, cleaned and maintained. They provide the ideal filter technology for every requirement (with or without a bag depending on the version). The front of the unit allows convenient, direct access to all operating elements. All parameters can be very easily set using a membrane keypad or via a clear multifunctional display.










Select the perfect size

SILENT extraction units are available as single-workstation or two-workstation extraction units and also for use with a CAD-CAM system. All versions are compact and slimline.

Overview

Extraction units

	Name	Single workbench extraction	Two workbench extraction	Device extraction unit	Filter technology	Motor technology	Page
	SILENT EC2		■		Bag- free	EC	24
	SILENT TC2		■		Bag- free	Collector	25
	SILENT TC	■			Bag- free	Collector	26
	SILENT TS2		■		Filter bag	Collector	27
	SILENT TS	■			Filter bag	Collector	28
	SILENT compact	■			Bag- free	Collector	29
	Vortex compact 3L			■	Filter bag	Collector	30

SILENT EC2

Two workbench extraction

Powerful, bag-free extraction unit with two independently controlled suction ports, automatic filter cleaning and EC motor technology.

Advantages

- Reliable production process through brushless EC motor technology (guaranteed runtime of 5000 operating hours).
- Consistent suction power thanks to automatic re-adjustment.
- Low operating noise of max. 55 dB (A).

Details

- No follow-up costs due to bag-free dust collection.
- Intuitive operation incl. handpiece calibration with large multifunctional display.



Suction power only when and where you need it – thanks to intelligent, independent control of the two pinch valves

Technical data

Permissible mains voltage	220–240 V 120 V 100 V
Permissible mains frequency	50/60 Hz
Power consumption	1610 VA (230 V) 1440 VA (120 V) 1150 VA (100 V)
Volume flow (max.)	3980 l/min // 2.34 ft ³ /s
Max. depression	257 hPa 262 hPa 255 hPa // 3.73 psi 3.8 psi 3.7 psi
Filter quality	Class M according to EN 60335-2-69
Max. permitted connected load of the plug-in socket	1840 W (230 V) 430 W (230 V) 350 W (100 V)
Min./ max. connection pressure external	4,5–8 bar // 65–116 psi
Total connected power	3450 W (230 V) 1800 W (120 V) 1500 W (100 V)
Number of suction hoses	2
Sound pressure level (LpA) (at max. volume flow)	55 dB (A)
Weight (empty)	~18,5 kg // ~40.8 lbs
Dimensions (W x H x D)	285 x 535 x 540 mm // 11.2 x 21.1 x 21.2 "
Ø suction fittings interior	45 mm // 1.77 "

Ø suction fittings exterior	50 mm // 1.97 "
Fill level dust collector	~7 l // ~1.85 gal

Ordering information

SILENT EC2, 220-240 V	No. 29370000
SILENT EC2, 100-120 V	No. 29371000
SILENT EC2, 100 V	No. 29372000
Starter kit waste bag for SILENT TC, TC2, EC2 & powerCAM EC / TC	No. 29340015
External ventilation SILENT TC / TC2 / EC2 / powerCAM EC,	No. 29370002
Adapter incl. Ø100 mm plastic tube, 2 m	
Pinch valve straight, 1 piece	No. 900021526
Further accessories	Page 33
Hoses, mufflers and adapters	Page 33

SILENT TC2

Two workbench extraction

Powerful, bag-free extraction unit with two independently controlled suction ports, automatic filter cleaning and long-lasting collector motor.

Advantages

- Consistent suction power thanks to automatic re-adjustment.
- 3x longer service life in comparison to conventional collector motors (1000 operating hours guaranteed).
- Low operating noise of max. 55 dB (A).

Details

- No follow-up costs due to bag-free dust collection.
- Working without interruption due to an uncomplicated motor change within minutes.
- Effective dust reduction using a high volume flow (approx. 4.000 l/min.).



No follow-up costs thanks to bag-free system

Technical data

Permissible mains voltage	220–240 V
Power consumption	850 W (230 V)
Volume flow (max.)	3980 l/min // 2.34 ft ³ /s
Max. depression	281 hPa // 4.1 psi
Filter quality	Class M according to EN 60335-2-69
Max. permitted connected load of the plug-in socket	2000 W (230 V)
Min./ max. connection pressure external	4,5–8 bar // 65–116 psi
Total connected power	2850 W (230 V)
Number of suction hoses	2
Sound pressure level (LpA)	55 dB (A)
Weight (empty)	~23 kg // ~50.7 lbs
Dimensions (W x H x D)	285 x 535 x 540 mm // 11.2 x 21.1 x 21.2"
Ø suction fittings interior	45 mm // 1.77"
Ø suction fittings exterior	50 mm // 1.97"
Fill level dust collector	~7 l // ~1.85 gal

Ordering information

SILENT TC2, 220-240 V	No. 29360000
SILENT TC2, 100-120 V	No. 29361000
Starter kit waste bag for SILENT TC, TC2, EC2 & powerCAM EC / TC	No. 29340015
External ventilation SILENT TC / TC2 / EC2 / powerCAM EC,	No. 29370002
Adapter incl. Ø100 mm plastic tube, 2 m	
Pinch valve straight, 1 piece	No. 900021526
Further accessories	Page 33
Hoses, mufflers and adapters	Page 33

SILENT TC

Single workbench extraction

Powerful, bag-free extraction unit with automatic filter cleaning and long-lasting collector motor.

Advantages

- No follow-up costs due to bag-free dust collection.
- Low operating noise of max. 54.3 dB (A).
- 3x longer service life in comparison to conventional collector motors (1000 operating hours guaranteed).

Details

- Comfortable operation of the switch-on function through key combination.
- Working without interruption due to uncomplicated motor change within minutes.



silent



Intuitive, convenient operation and programming

Technical data

Permissible mains voltage	220–240 V
Permissible mains frequency	50/60 Hz
Power consumption	850 W (230 V) 850 VA (230 V)
Volume flow (max.)	3980 l/min // 2.34 ft ³ /s
Max. depression	281 hPa // 4.1 psi
Filter quality	Class M according to EN 60335-2-69
Max. permitted connected load of the plug-in socket	2000 W (230 V)
Total connected power	2850 W (230 V)
Number of suction hoses	1
Sound pressure level (LpA)	54.3 dB (A)
Weight (empty)	~22 kg // ~48.5 lbs
Dimensions (W x H x D)	275 x 535 x 540 mm // 10.8 x 21.1 x 21.3 "
Ø suction fittings interior	45 mm // 1.77 "
Ø suction fittings exterior	50 mm // 1.97 "
Fill level dust collector	~7 l // ~1.85 gal

Ordering information

SILENT TC, 220–240 V	No. 29350000
SILENT TC, 100–120 V	No. 29351000
Starter kit waste bag for SILENT TC, TC2, EC2 & powerCAM EC / TC	No. 29340015
External ventilation SILENT TC / TC2 / EC2 / powerCAM EC, Adapter incl. Ø100 mm plastic tube, 2 m	No. 29370002
Further accessories	Page 33
Hoses, mufflers and adapters	Page 33

SILENT TS2

Two workbench extraction

Powerful extraction unit with two separately controlled suction ports, durable collector motor and double filter system.

Advantages

- Constant suction power thanks to automatic re-adjustment.
- Low operating noise of max. 59 dB (A).
- 3x longer service life in comparison to conventional collector motors (1000 operating hours guaranteed).

Details

- Intuitive operation incl. handpice calibration with large multifunctional display.
- High degree of health protection through double filter system, optional H/HEPA filter available.
- Working without interruption due to an uncomplicated motor change within minutes.



silent



Simple operation and programming of both independent suction ports

Technical data

Permissible mains voltage	220–240 V 120 V
Permissible mains frequency	50/60 Hz 60 Hz
Power consumption	1400 W (230 V) 1400 W (120 V)
Volume flow (max.)	3300 l/min (230 V) 3300 l/min (120 V) 1.94 ft ³ /s (230 V) 1.94 ft ³ /s (120 V)
Max. depression	200 hPa // 2.9 psi
Filter quality	Class M according to EN 60335-2-69
Max. permitted connected load of the plug-in socket	2000 W (230 V) 360 W (120 V)
Min. / max. connection pressure external	4,5–8 bar // 65–116 psi
Total connected power	3400 W (230 V) 1800 W (120 V)
Number of suction hoses	2
Sound pressure level (LpA) (at max. volume flow)	59 dB (A)
Weight (empty)	~27 kg // ~59.5 lbs
Dimensions (W x H x D)	224 x 591 x 584 mm // 8.8 x 23.3 x 23.0"
Ø suction fittings interior	45 mm // 1.77"
Ø suction fittings exterior	50 mm // 1.97"
Fill level dust collector	7,5 l // 2 gal

Ordering information

SILENT TS2, 220-240 V	No. 29300050
SILENT TS2, 120 V	No. 29301050
Adapter for external exhaust air duct SILENT TS / TS2, 1 piece	No. 29210004
Pinch valve straight, 1 piece	No. 900021526
Filters and bags	Page 33
Further accessories	Page 33
Hoses, mufflers and adapters	Page 33

SILENT TS

Single workbench extraction

High performance extraction unit with durable collector motor and double filter system.

Advantages

- Low operating noise of max. 63 dB (A).
- 3x longer service life in comparison to conventional collector motors (1000 operating hours guaranteed).
- High level of health protection due to double filter system, optional H/HEPA filter available.

Details

- Working without interruption due to an uncomplicated motor change within minutes.
- Effective dust reduction using a high volume flow (approx. 3300 l/min.).

Workflow guarantee

Renfert provides a guarantee of 1000 operating hours of motor running time for SILENT TS motors. The tests even showed service lives of over 2400 working hours in extreme cases.



Reliable collection in a large dust bag and easy, dust-free disposal

Technical data

Permissible mains voltage	220–240 V 100–120 V
Permissible mains frequency	50/60 Hz
Power consumption	1400 W (230 V) 1400 W (120 V) 1000 W (100 V)
Volume flow (max.)	3300 l/min (230 V) 3300 l/min (120 V) 2900 l/min (100 V) // 1.94 ft ³ /s (230 V) 1.94 ft ³ /s (120 V) 1.7 ft ³ /s (100 V)
Max. depression	200 hPa // 2.9 psi
Filter quality	Class M according to EN 60335-2-69
Max. permitted connected load of the plug-in socket	2000 W (230 V) 360 W (120 V) 500 W (100 V)
Total connected power	3400 W (230 V) 1800 W (120 V) 1500 W (100 V)
Number of suction hoses	1
Sound pressure level (LpA) (at max. volume flow)	63 dB (A)
Weight (empty)	~26 kg // ~57 lbs
Dimensions (W x H x D)	224 x 591 x 564 mm // 8.8 x 23.3 x 22.2"
Ø suction fittings interior	32 mm // 1.26"
Ø suction fittings exterior	40 mm // 1.57"
Fill level dust collector	7,5 l // 2 gal

Ordering information

SILENT TS, 220-240 V	No. 29210050
SILENT TS, 100-120 V	No. 29211050
Adapter for external exhaust air duct SILENT TS / TS2, 1 piece	No. 29210004
Filters and bags	Page 33
Further accessories	Page 33
Hoses, mufflers and adapters	Page 33

SILENT compact

Single workbench extraction

Compact, dustbag-free suction with automatic filter cleaning and durable collector motor.

Advantages

- No follow-up costs due to bag-free dust collection.
- Low operating noise of max. 55 dB (A).
- 3x longer service life in comparison to conventional collector motors (1000 operating hours guaranteed).

Details

- Comfortable operation of the switch-on function through key combination.
- Working without interruption due to uncomplicated motor change within minutes.



silent



compact



Bag-free system with automatic filter cleaning

Technical data

Permissible mains voltage	220–240 V 120 V 100 V
Permissible mains frequency	50/60 Hz
Power consumption	490 W (230 V) 480 W (120 V) 480 W (100 V)
Volume flow (max.)	2500 l/min // 1.47 ft ³ /s
Max. depression	219 hPa // 3.2 psi
Filter quality	Class M according to EN 60335-2-69
Max. permitted connected load of the plug-in socket	1350 W (230 V) 480 W (120 V) 320 W (100 V)
Number of suction hoses	1
Sound pressure level (LpA) (at max. volume flow)	55 dB (A)
Weight (empty)	~13,2 kg // ~29.1 lbs
Dimensions (W x H x D)	245 x 440 x 500 mm // 9.6 x 17.3 x 19.7"
Ø suction fittings interior	35 mm // 1.38"
Ø suction fittings exterior	40 mm // 1.57"
Fill level dust collector	~2,6 l // ~0.69 gal

Ordering information

SILENT compact, 220-240 V	No. 29340000
SILENT compact, 120 V	No. 29341000
SILENT compact, 100 V	No. 29341500
Further accessories	Page 33
Hoses, mufflers and adapters	Page 33

Vortex compact 3L

Device extraction unit

Wet and dry extraction with high suction power and durable collector motor for devices with high dust generation.

Advantages

- Health protection due to double filter system, optional H/Hepa filter available.
- 25% increase of the filter capacity at the push of a button with free filter system.
- Virtually dust-free disposal of collected dust by means of extremely tear-resistant, large filter bags (15 L).

Details

- Not compatible in combination with the Basic eco fine sandblasting unit.



The inexpensive all-rounder for sandblasters, dry trimmers, dental arch trimmers, etc.

Technical data

Permissible mains voltage	230–240 V 120 V
Permissible mains frequency	50/60 Hz 60 Hz
Power consumption	1200 W (230 V) 840 W (120 V)
Volume flow (max.)	3700 l/min (230 V) 3700 l/min (120 V) // 2.17 ft ³ /s (230 V) 2.17 ft ³ /s (120 V)
Max. depression	250 hPa 230 hPa
Filter quality	Class M according to EN 60335-2-69
Max. permitted connected load of the plug-in socket	2400 W (230 V) 600 W (120 V)
Number of suction hoses	1
Sound pressure level (LpA)	66.3 dB (A)
Weight	~10 kg // ~22 lbs
Dimensions (W x H x D)	385 x 600 x 480 mm // 15.2 x 23.6 x 18.9"
Fill level dust collector	~30 l // ~7.9 gal

Ordering information

Vortex compact 3L, 230-240 V	No. 29245000
Vortex compact 3L, 120 V	No. 29246000
Waste bag, 5 pieces	No. 29245002
Dust bag, 5 pieces	No. 29245003
Fine filter, 1 piece	No. 29245004
Cloth filter, 1 piece	No. 29245005
Filters and bags	Page 33
Further accessories	Page 33
Hoses, mufflers and adapters	Page 33